

# EQUITABLE ACCESS TO ADVANCED COURSES

## STATEWIDE

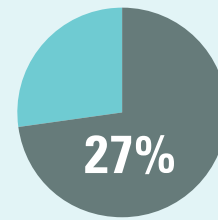


### MIDDLE SCHOOL ADVANCED SCIENCE: EARTH SCIENCE

**WHY IT MATTERS:** Students who take Earth Science in middle school have more opportunities to excel in advanced math and science in high school.

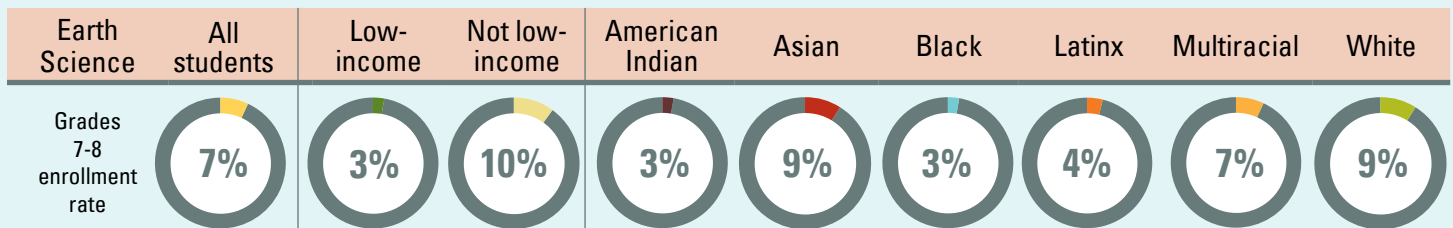
#### ► How many middle schools offer Earth Science?

Only about 1 in 4 middle schools offer Earth Science statewide.



#### ► Who gets to enroll in Earth Science in middle school?

New York State enrolls students who are not low-income at a rate 2.4 times greater than their low-income peers. New York State enrolls White students at a rate 1.3 times greater than their Latinx peers and 1.8 times greater than their Black peers.



#### ► What does fair representation in Earth Science look like?

More than 61,000 additional students who are low-income and 48,000 additional Latinx and Black students should be enrolled in Earth Science to achieve representation at the same rate as students in schools with the highest participation rates.

**61,773**

students who are low-income



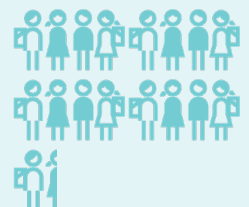
**31,242**

Latinx students



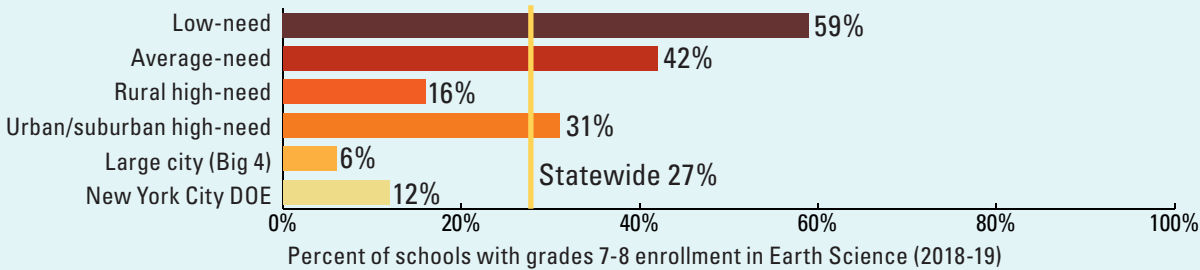
**17,477**

Black students



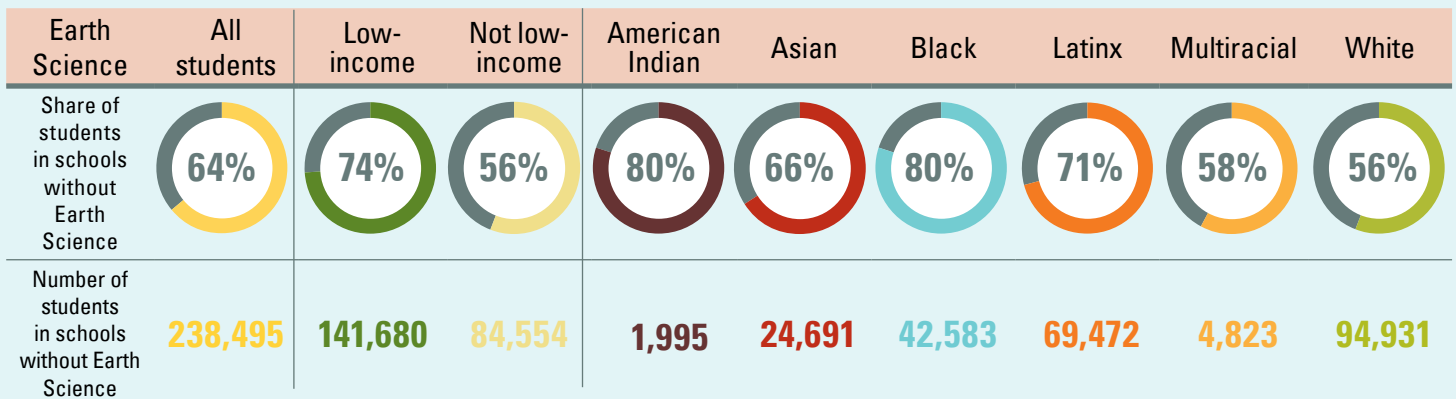
## ► Where is Earth Science offered?

High-need school districts are less likely to offer Earth Science than low- and average-need districts.



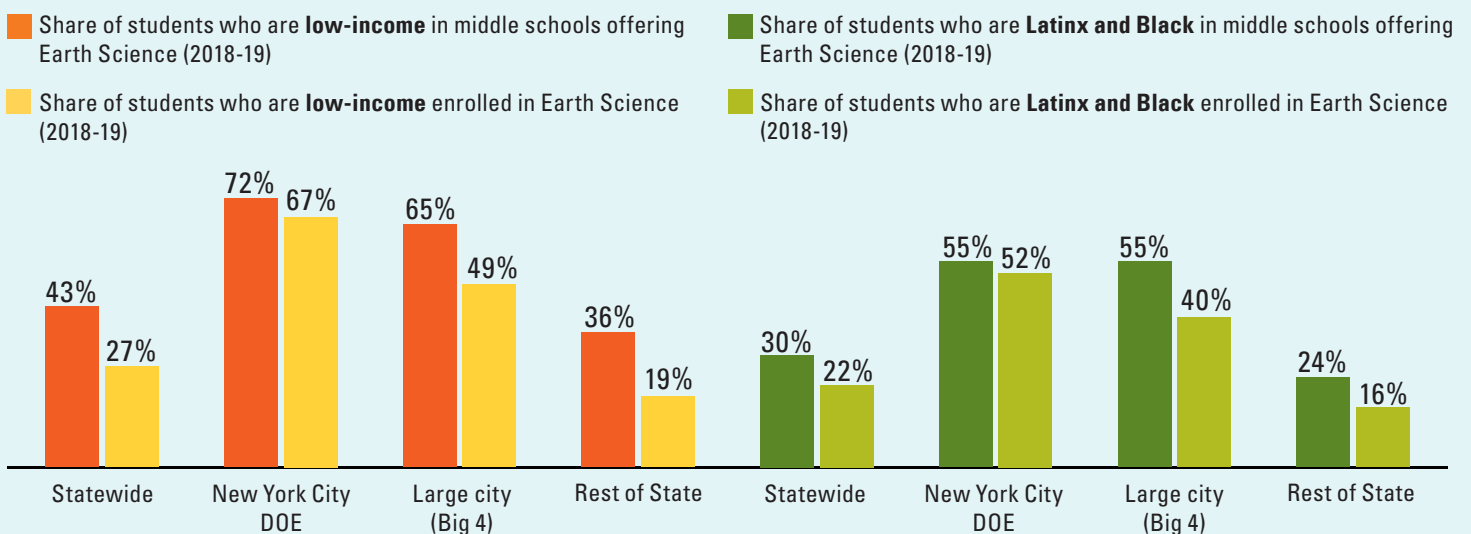
## ► Who attends middle schools where Earth Science is not offered?

The large majority of Latinx and Black students and of students who are low-income attend middle schools that do not offer Earth Science.



## ► Are students fairly represented when their middle schools offer Earth Science?

Even in middle schools that offer Earth Science, students who are low-income and Latinx and Black students are under-represented in course enrollment.



Analysis is based on 2018-19 data provided by the New York State Education Department and conducted by The Education Trust–New York. Analysis includes schools with enrollment in grades 7-8 of at least 25 students. Statewide and race/ethnicity findings are based on an analysis of 1,290 schools; economic status findings are based on an analysis of 1,212 schools due to data suppression. For additional information on data exclusions, please visit